

### A. Model 116.120

#### Adjusting values in mm

---

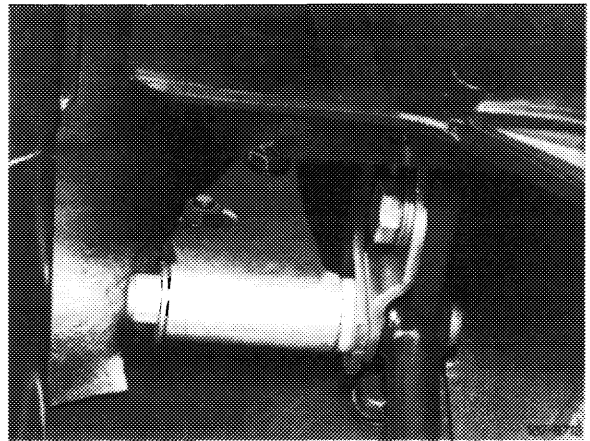
Length of connecting rod (11) from accelerator pedal to guide lever	122
Length of pushrod (10) from longitudinal regulating shaft to accelerator pedal	60

---

#### Removal

---

- 1 Remove accelerator pedal (30–330).
- 2 Disconnect connecting rod.
- 3 Disconnect return spring, unscrew fastening nuts from bearing bracket and remove regulating shaft together with bearing bracket.



#### Installation

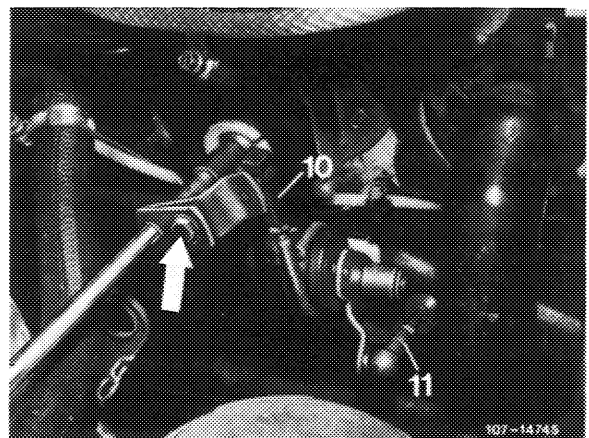
---

- 4 For installation proceed vice versa, while connecting return spring to inside hole. Grease bearing points as well as ball sockets of regulation with Molykote Longterm 2.

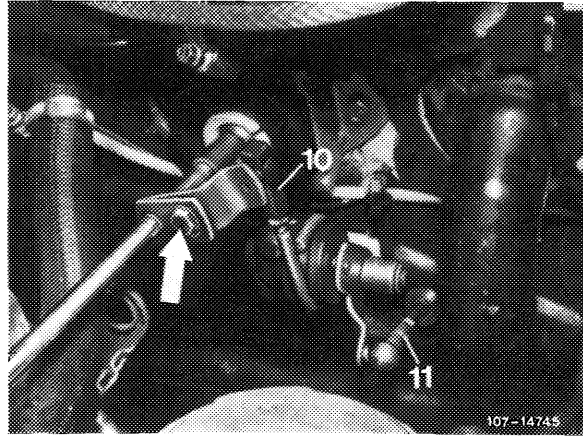
#### Adjustment

---

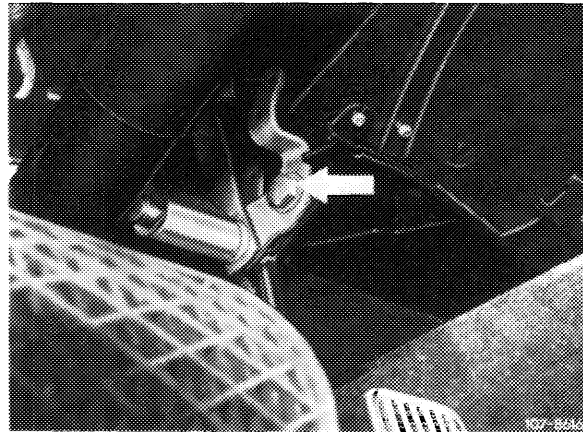
- 5 With engine stopped, step on accelerator pedal from inside vehicle up to stop on kickdown switch. Regulating lever on injection pump should rest against full load stop. Loosen adjusting screw (arrow), if required, adjust throttle linkage in such a manner that regulating lever rests against full throttle stop.



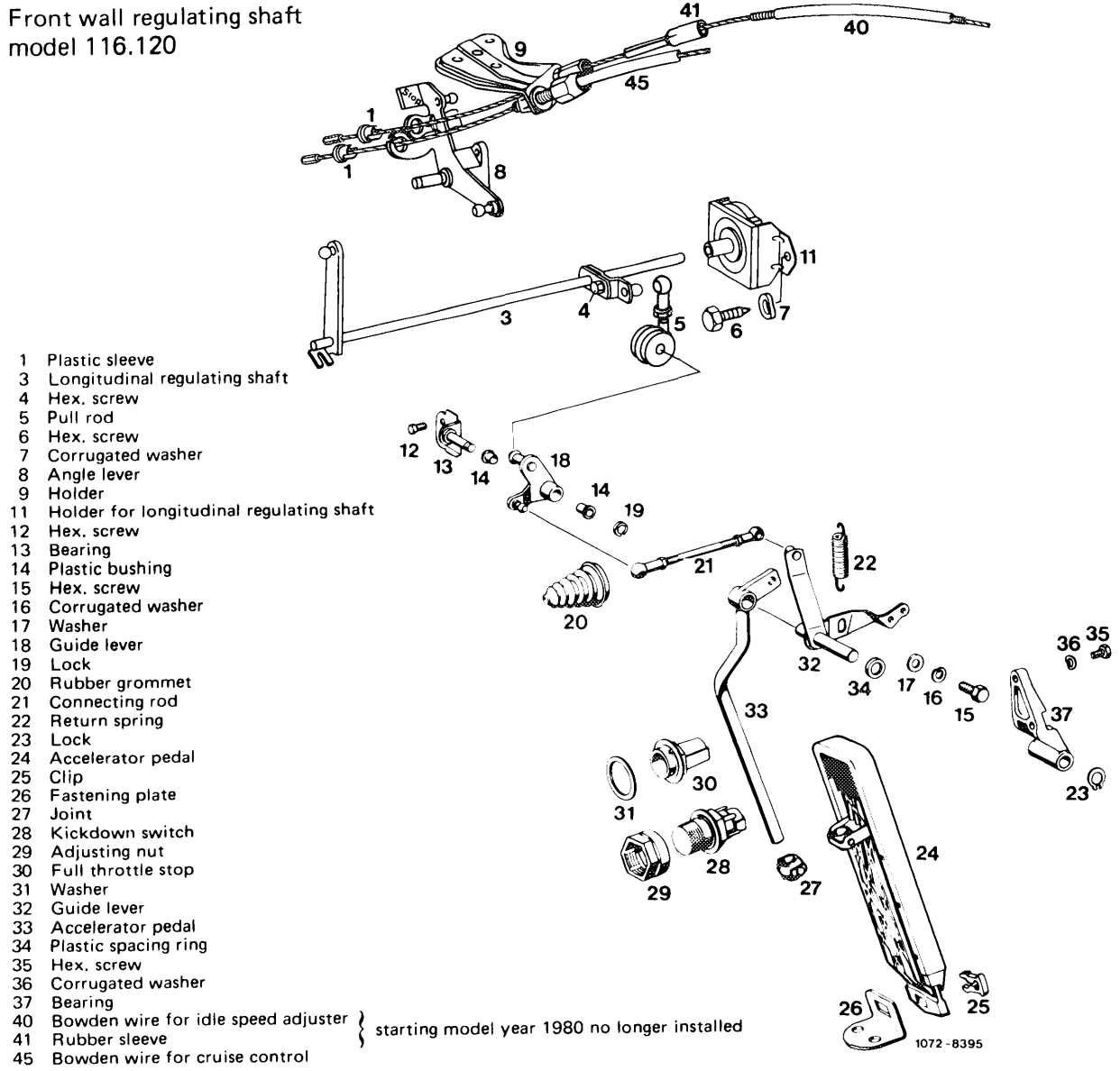
If the full load or idle speed stop is not attained with this adjustment, set pushrod (10) from longitudinal regulating shaft to accelerator pedal to 68 mm, measured from center of ball socket to center of damping ring.



If the full load or idle speed stop is not attained with the above adjustment, set connecting rod (11) from guide lever engine compartment to accelerator pedal to 122 mm, measured from center of ball socket to center of ball socket. Adjust regulating lever inside vehicle, if required. For this purpose, loosen fastening screw (arrow), slightly release accelerator pedal and tighten fastening screw again.



Front wall regulating shaft  
model 116.120



## B. Model 123.1

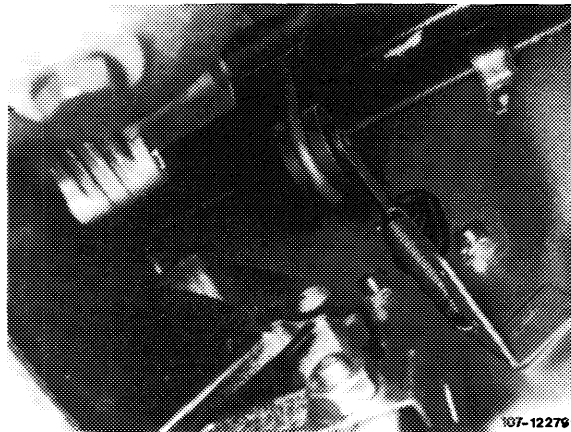
### Length of regulating rod in mm

Pushrod (5 in Fig. item 5)

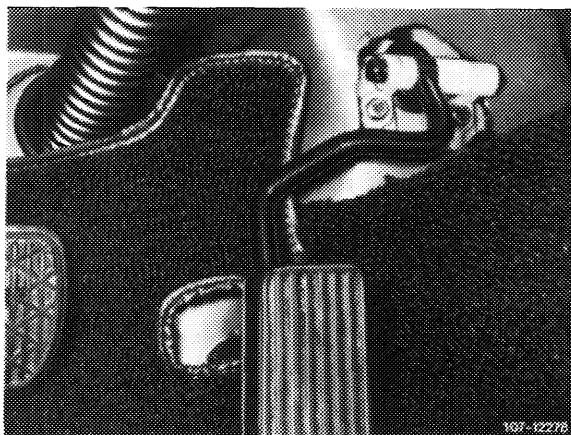
200

### Removal

- 1 Remove accelerator pedal (30–330).
- 2 Disconnect return spring and pushrod.



- 3 Unscrew plastic bearing inside vehicle and remove shaft by turning.



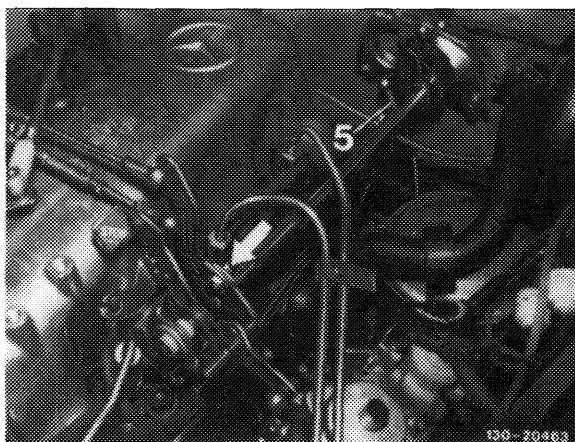
### Installation

- 4 For installation proceed vice versa, while connecting return spring to inside hole.

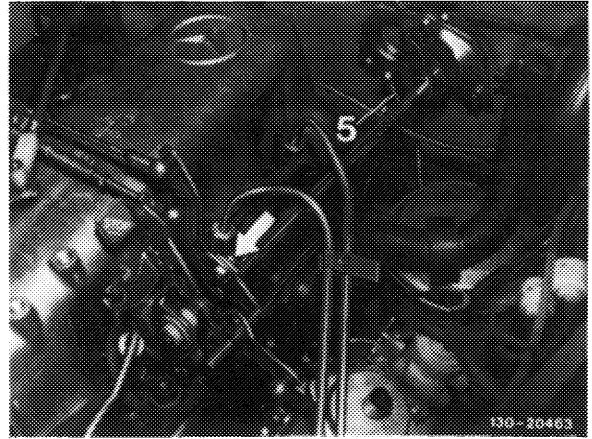
Grease bearing points as well as ball sockets of regulation with Molykote Longterm 2.

### Adjustment

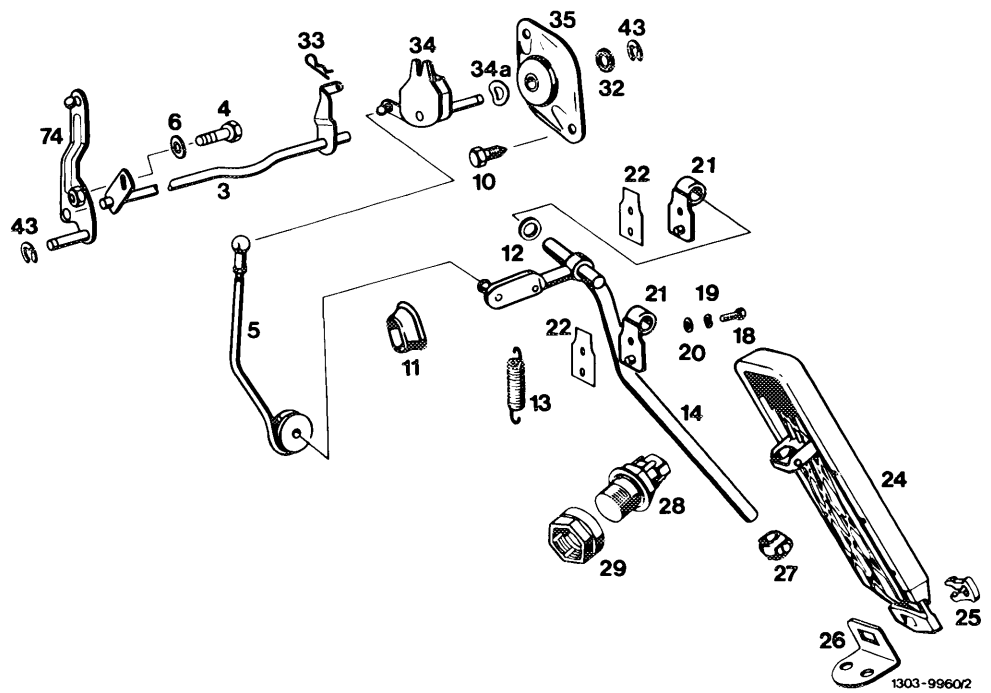
- 5 With engine stopped, step on accelerator pedal from inside vehicle up to stop on kickdown switch. Regulating lever on injection pump should rest against full load stop. Loosen adjusting screw (arrow), if required. Set throttle linkage in such a manner that regulating lever rests against full throttle stop.



If the full load or idle speed stop is not attained with this adjustment, set pushrod (5) from longitudinal regulating shaft to accelerator pedal to 200 mm, measured from center of ball socket to center of damping ring and connect.



### Front wall regulating shaft model 123.1



**Adjusting values in mm**

---

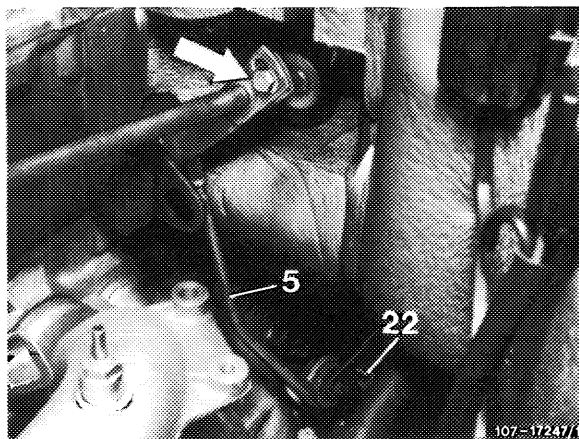
Length of pushrod (5) from longitudinal regulating shaft to accelerator pedal	222
---	-----

---

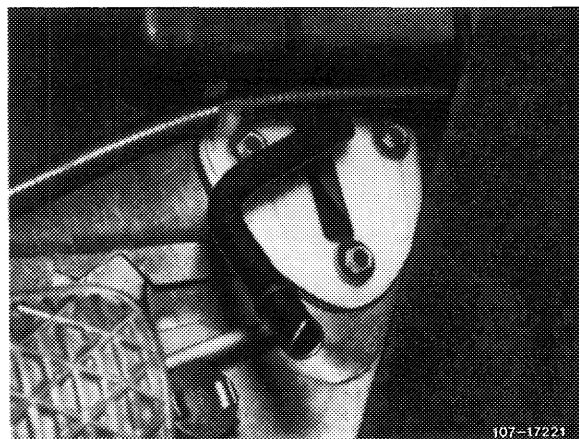
**Removal**

---

- 1 Disconnect return spring (22) and force-off connecting rod (5).
- 2 Remove accelerator pedal (30–330).



- 3 Unscrew fastening screws on bearing bracket, remove bearing bracket and accelerator pedal lever.



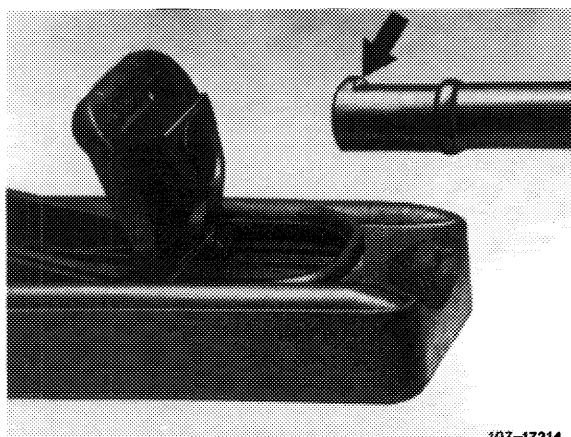
**Installation**

---

- 4 For installation proceed vice versa.

Grease bearing points as well as ball sockets of regulation with Molykote Longterm 2.

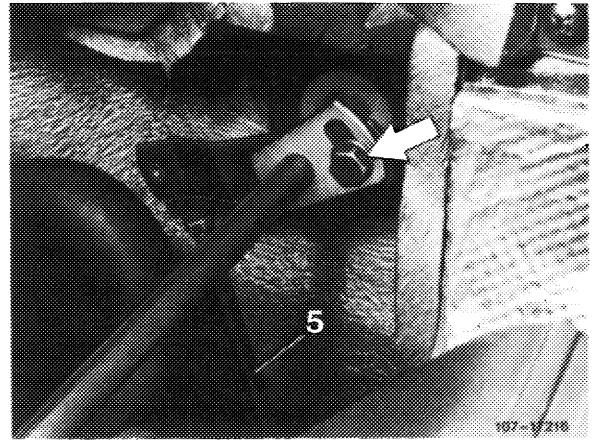
The connection from accelerator pedal lever to accelerator is maintenance-free and requires no lubrication.



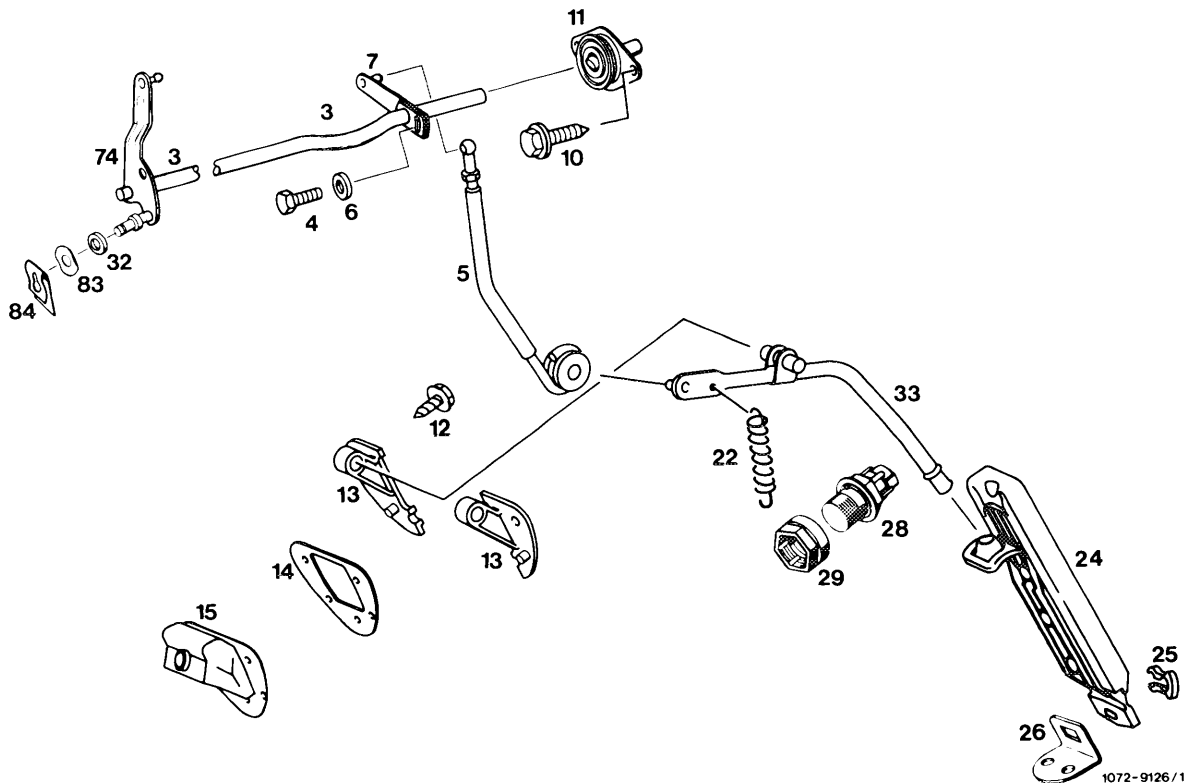
## Adjustment

5 With engine stopped, step on accelerator pedal from inside vehicle up to stop on kickdown switch. Regulating lever on injection pump should rest against full load stop. Loosen adjusting screw (arrow), if required. Adjust throttle linkage in such a manner that regulating lever rests against full load stop.

If the full throttle or idle speed stop is not attained with this adjustment, set pushrod (5) from longitudinal regulating shaft to accelerator pedal to 222 mm, measured from center of ball socket to center of damping ring.



## Front wall regulating shaft model 126.120



- |    |   |    |                         |
|----|---|----|-------------------------|
| 3  | Longitudinal regulating shaft             | 22 | Return spring           |
| 4  | Hex. screw                                | 24 | Accelerator pedal       |
| 5  | Pushrod                                   | 25 | Clip                    |
| 6  | Washer                                    | 26 | Fastening plate         |
| 7  | Guide lever                               | 28 | Kickdown switch         |
| 10 | Hex. screw                                | 29 | Adjusting nut           |
| 11 | Bearing for longitudinal regulating shaft | 32 | Plastic spacing ring    |
| 12 | Hex. screw                                | 33 | Accelerator pedal lever |
| 13 | Bearing                                   | 74 | Guide lever             |
| 14 | Intermediate plate                        | 82 | Corrugated washer       |
| 15 | Rubber sleeve                             | 84 | Lock                    |