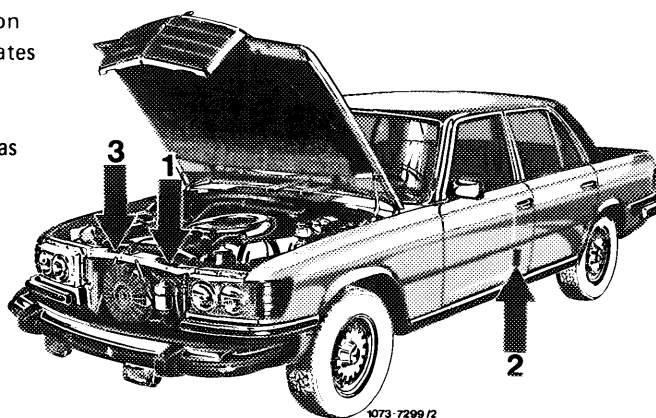


The various emission control systems of USA version vehicles are identified by respective information plates (arrows 1, 2 and 3).

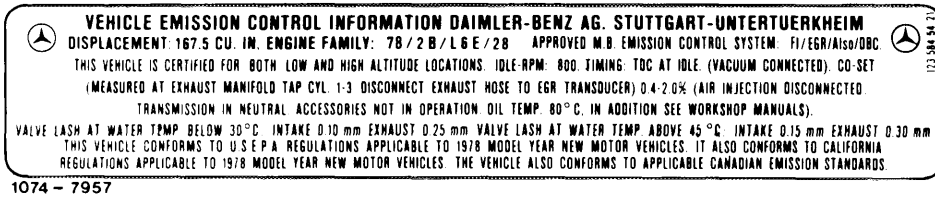
The respective plate shows the identification data, as well as all the important engine adjusting data.



Recognising emission control system from color of information plate – basic color/lettering

Model year	Federal version	California version	Federal version high altitudes	Federal version tourist vehicles	California version tourist vehicles
1973	black/silver	black/silver	--	--	--
1974		green/silver	--	--	--
1975		green/silver	--	yellow/silver	yellow/silver
1976					
1977	black/white	yellow/black	red/black	black/white	yellow/black
1978			--		
1979			--		
1980		black/white	--		black/white
1981					

1. Information plate on cross-member in front of radiator



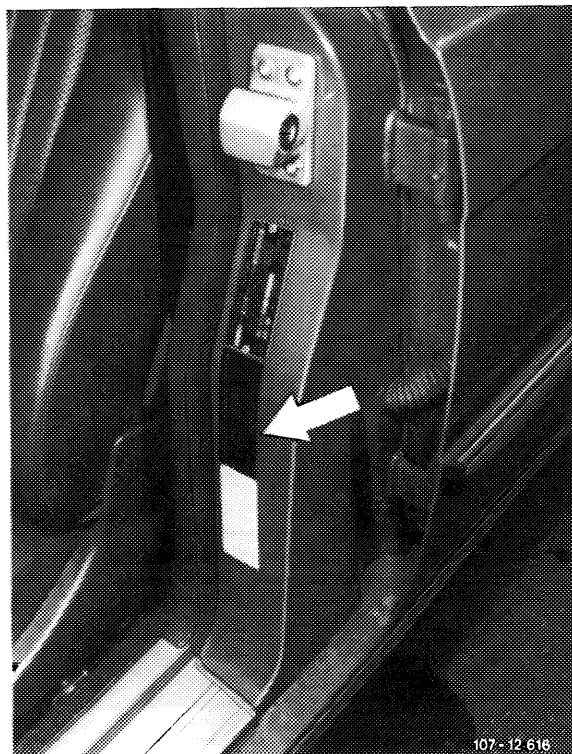
Recognising catalyst from color of information plate

Basic color/lettering

Model year	Federal version	California version	Federal version high altitudes	Federal version tourist vehicles	California version tourist vehicles	
1977	black/silver	green/silver	black/silver	red/silver	blue/silver	
1978		red/silver	—		red/silver	red/silver
1979			—			
1980		black/silver	—			
1981						

2. Information plate on door post of driver's door

This plate shows whether vehicle is provided with or without catalyst (s).



107-12 616

Information plates

This vehicle is provided with catalyst(s).



1074 - 8259

Tourist vehicle

This vehicle is not provided with catalyst(s) by manufacturer.

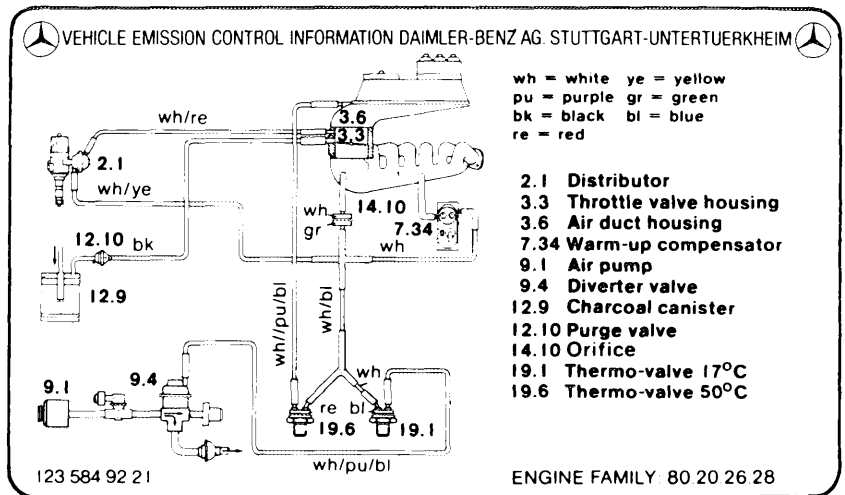
Catalyst(s) must be installed following import into USA.



1074 - 8260

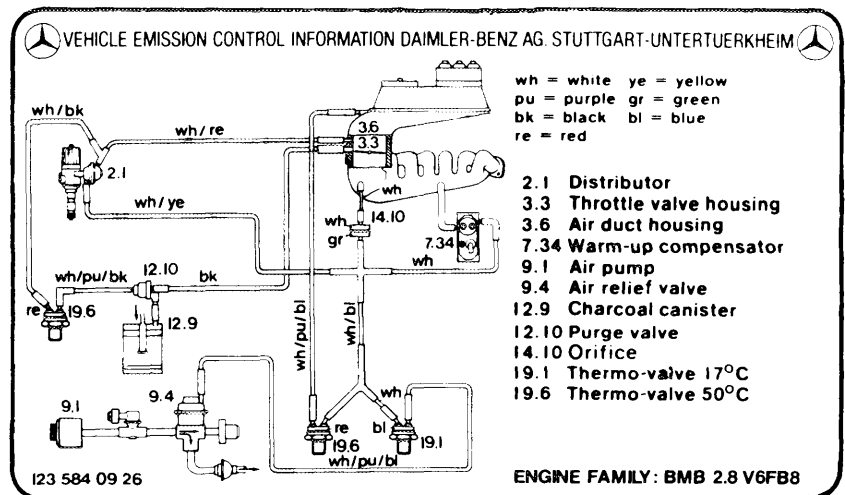
3. Information plate for vacuum line layout on cross member in front of radiator (for California only starting model year 1980).

This plate shows the vacuum line layout for all emission system components in engine compartment.



Model year 1980

1074-9067



Model year 1981

1143-9843