

88–100 Removal and installation of front fender

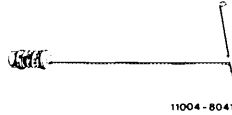
Special tools

Hex. ratchet 10 mm



000 589 30 16 00

Hinged wrench 10 mm



198 589 00 09 00

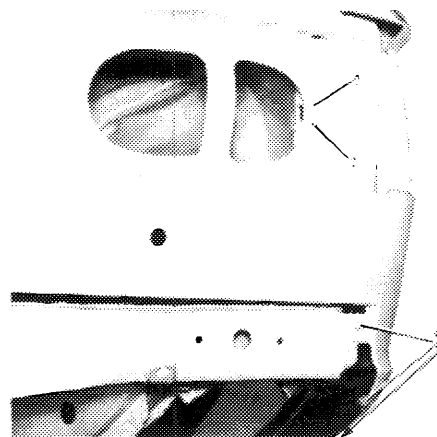
Conventional tool

Hot-air blower approx. 600 °C

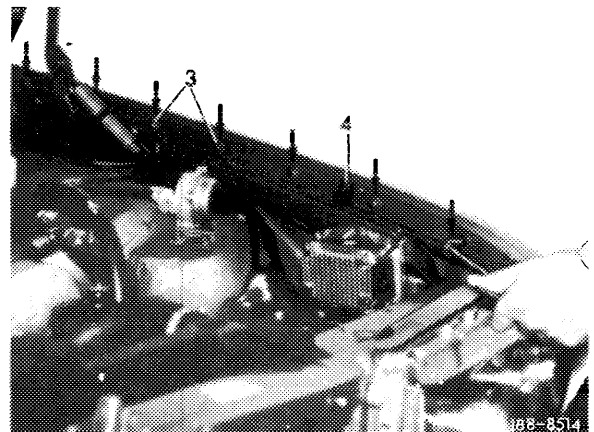
e. g. Jumbotherm K 25
made by Zinser, 7333 Ebersbach/Fils

Removal

- 1 Remove bumper with bracket (88–200).
- 2 Remove ornamental trim on front wall pillar (68–520).
- 3 Remove turn signal lamp.
- 4 Remove headlight.
- 5 Turn out the two screws (1) in headlight housing and screws (2) on fender bottom.
- 6 Turn out the sheet metal screws (3) at channel top, using a hex. ratchet 10 mm or a hinged wrench 10 mm.
- 7 Unscrew rubber stop (4) for engine hood.
- 8 Remove bulkhead under fender.



188-8513



188-8514

9 Unscrew screws (5) on front wall pillar with articulated wrench 10 mm (6).

10 Loosen trim strip at entrance in front range, unscrew the two screws (7) underneath and loosen fender from side member by means of a plastic wedge.

Note: Loosen stuck Phillips screws by knocking against applied screw driver.

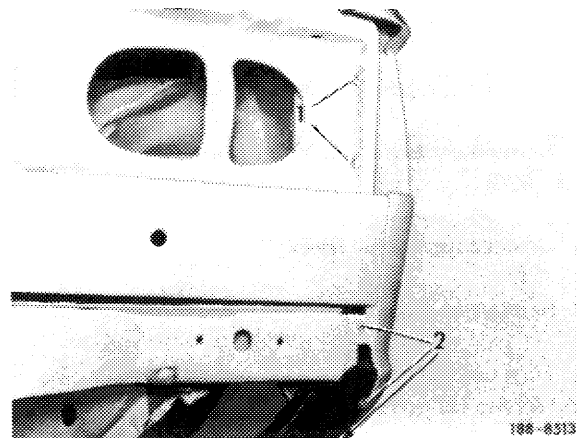
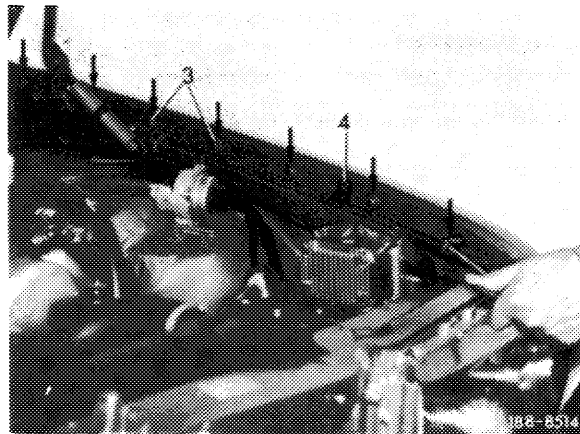
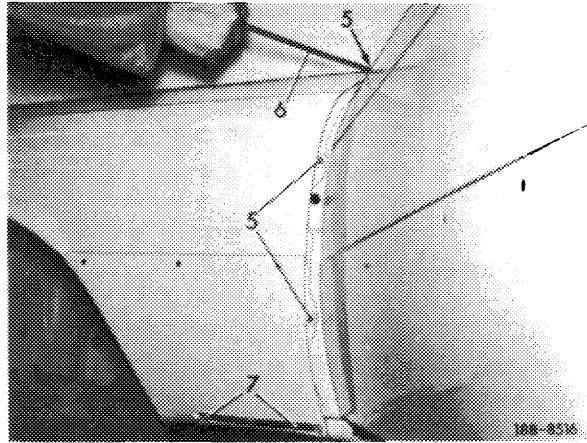
11 Cover electric lines on respective side of engine compartment by means of an asbestos blanket. If the fender is heated by means of a hot-air blower, covering with asbestos blanket is not required.

12 Slowly and uniformly heat entire fold on front fender in range of sheet metal screws (3) on fold at top and the two screws (1) in headlight housing **from direction of engine compartment**. In individual cases, heating of fold may take several minutes.

13 Apply a sharp industrial knife to cut the softened PVC from wheelhouse up to panel. The PVC will be completely cut along fold from front corner of front fender to end of coating.

Note: A large welding torch with a long, soft flame or a 600° hot air blower may be used for heating. By careful handling, the fender can be heated without damaging paintwork.

14 Lift front fender starting at the front and pull out in upward direction.



Installation

15 Provide spare fender prior to assembly with permanent underfloor protection.

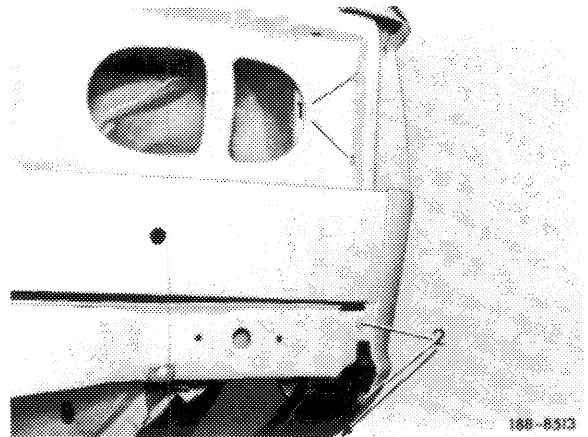
16 Clean front wall pillar and fold on wheelhouse from sealing compound residue and provide with anti-corrosion wax.

17 If damaged, glue new backing to fold on wheelhouse and in range of side member, as well as on front wall pillar.

18 Fit front fender in such a manner that the transition to center piece on front wall and to driver's door is perfectly aligned.

19 Melt fastening holes out of backing with a heated welding wire and screw down fender.

20 Upon assembly carefully spray connections with permanent underfloor protection. Pay particular attention to making sure that the corner in range of headlight and the two screws (1) in headlight housing are perfectly sealed.

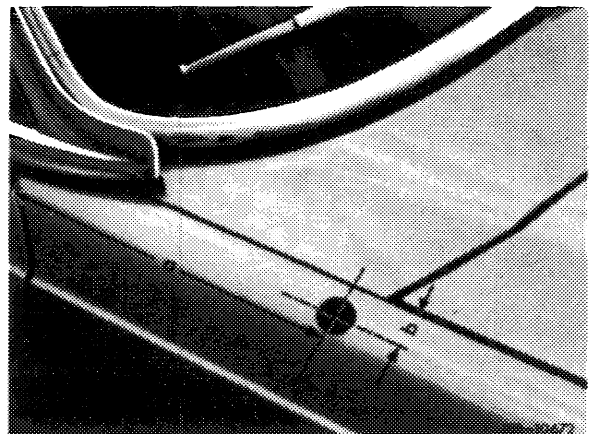


21 Install headlights and adjust.

22 Fit engine hood and adjust stop buffer.

23 When permanent underfloor protection on front fender is dry, complete repair preservation.

24 Install bulkhead and seal.



Layout antenna front fender right
a = 295 mm b = 28 mm
Match bore to type of antenna.