

General

Starting January 1st 1972 (production date) all USA version vehicles must be provided with a "seat belt warning system" on front seats. Regulations specify that the warning system should start operating a continuous or interval signal of at least 1 minute duration and additionally a continuous or flashing warning light with the legend "Fasten Seat Belts" or "Fasten Belts" if the seat belts are not put on prior to driving off.

The seat belt warning system is expected to start if item 1, together with item 2 or 3 of the following conditions shows up:

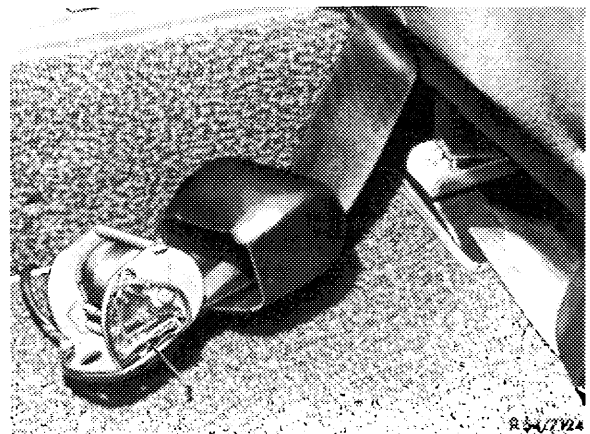
1. Ignition on vehicle is switched on and shift or selector lever is put into a forward drive position.
2. Seat belt of driver is pulled from its reeled-up condition less than approx. 10 cm (4 inches).
3. The front righthand seat is loaded with at least 21.5 kg (child) and the seat belt is also pulled out of its reeled-up position for less than approx. 10 cm (4 inches).

Starting December 1971, all USA version vehicles are provided with a seat belt warning system.

Operation

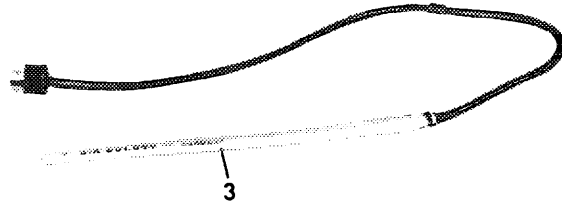
Models with automatic transmission

With the ignition switched on, the driving position engaged and the seat belts not put on, the seat belt switches (1) and (3) are closed, so that voltage is available at terminal 30 of relay for warning buzzer (14) and on seat contact switch (2) in padding of front passenger's seat.



1 Belt switch

If a driving position is engaged, the starter lockout switch (5) interrupts ground connection relay 14 (terminal 85). It will therefore remain in rest position (terminal 87a) and the current can flow to warning buzzer (10) as well as to warning lamp (6). The warning buzzer sounds off while simultaneously the warning lamp, which is connected in parallel, lights up. The warning buzzer (10) grounding connection is at warning switch (11) on ignition starter switch (12).

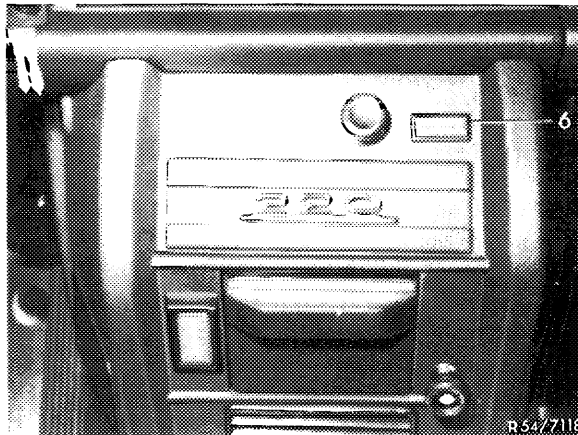


3 Seat contact switch in padding of front passenger's seat

R 54/7205

When the seat belts are put on, the seat belt switch opens and interrupts the current flow to relay 14 (terminal 30) and thereby also the warning system.

If selector lever position P or N is engaged, relays (14) and (13) are connected to ground on terminal 85. They will also interrupt the current flow toward warning system.

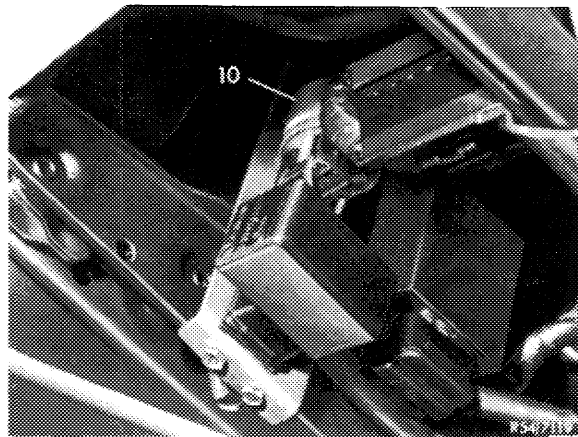


6 Warning lamp

R 54/7118

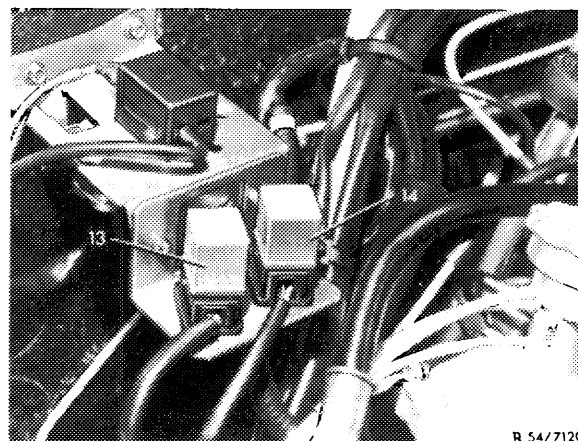
If the front passenger's seat is in use, the seat contact switch (2) in seat padding is closed. Subsequent function is as described above.

The installation of the seat belt warning system also required installation of two-way contact relay (13). Relay switches positive current to starter (terminal 50) and simultaneously interrupts current flow to refrigerant compressor.



10 Warning buzzer

R 54/7117



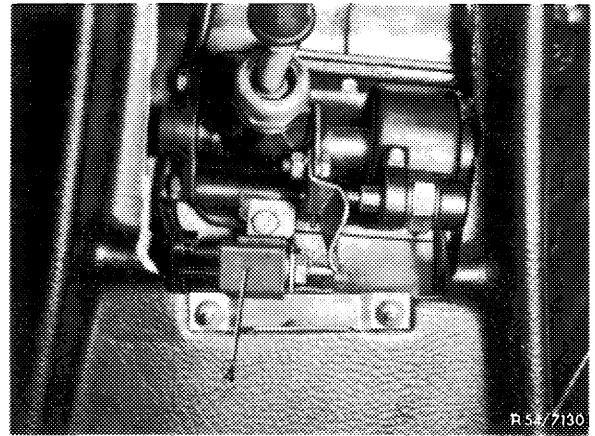
13 Relay starter/air conditioning
14 Relay warning buzzer

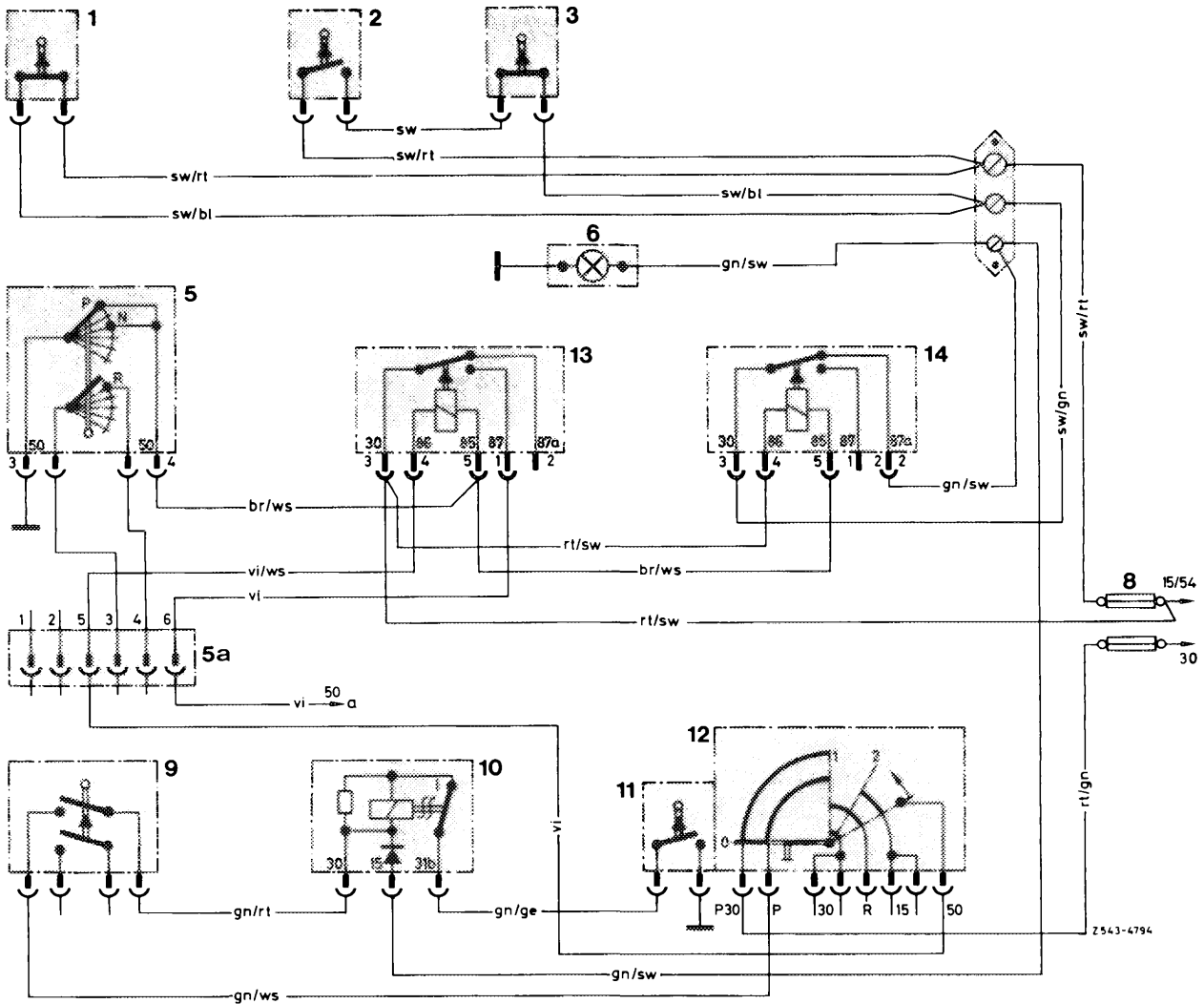
R 54/7120

Model 115.110 with manual transmission

Instead of starter lockout switch (5) as well as of relay (13) and (14) the flow shift carries the gear switch (4). It is closed in all driving speeds, so that in these positions the warning buzzer will sound and the warning lamp will light up if the seat belts are not worn.

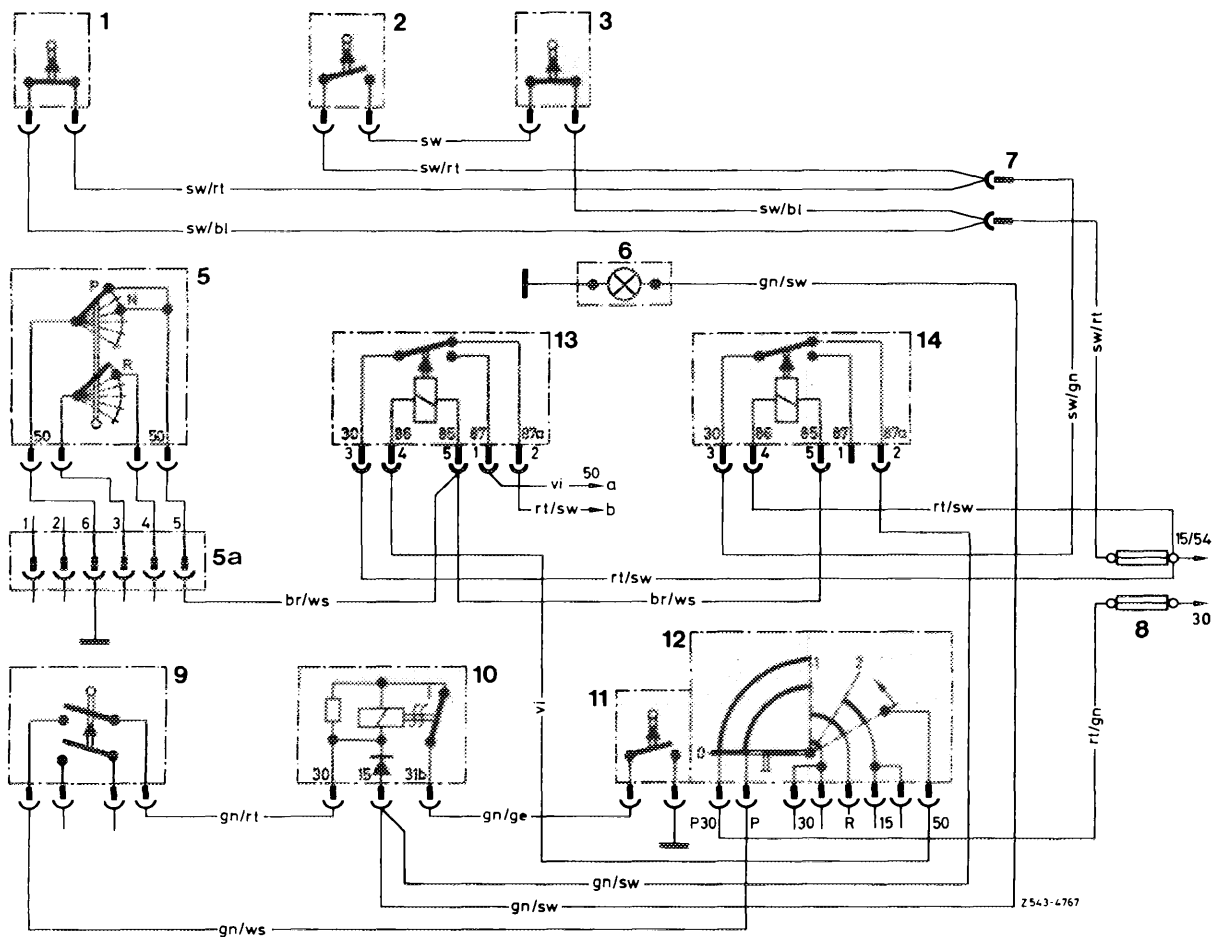
4 Gear switch





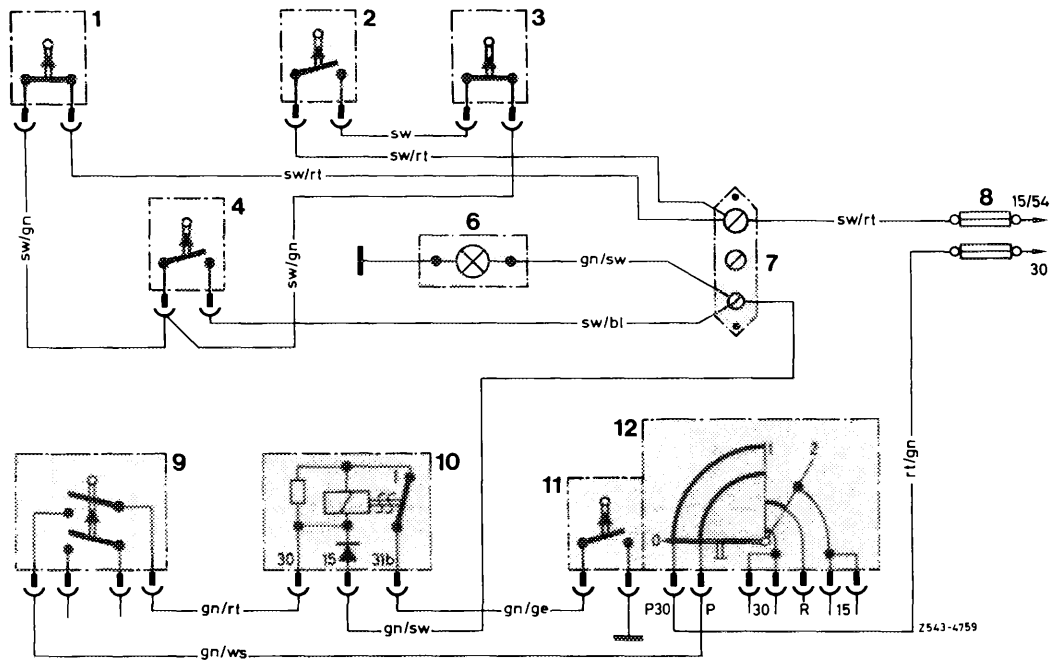
Wiring diagram for models 115.110 and 115.010 with automatic transmission

- | | |
|--|---|
| a To terminal 50 on starter | 6 Warning lamp (Fasten Seat Belts) |
| b To fuse box air conditioning | 7 Cable connector or double plug connection behind center console |
| 1 Seat belt switch left | 8 Fuses main fuse box |
| 2 Seat contact switch (front passenger's seat) | 9 Door contact switch left |
| 3 Seat belt switch right | 10 Warning buzzer |
| 5 Starter lockout and backup lamp switch | 11 Warning switch |
| 5a Plug on additional harness for automatic transmission | 12 Ignition starter switch |
| 1 + 2 Plug connection to kickdown switch | 13 Relay for starter/air conditioning |
| 3 + 4 Backup lamp contact | 14 Relay for warning buzzer |
| 5 + 6 Starter lockout contact | |



Wiring diagram for models 114.011

- | | |
|---|--|
| <ul style="list-style-type: none"> a To terminal 50 on starter b To fuse box air conditioning system 1 Seat belt switch left 2 Seat contact switch (front passenger seat) 3 Seat belt switch right 5 Starter lockout and backup lamp switch 5a Plug on additional harness automatic transmission <ul style="list-style-type: none"> 1 + 2 Plug connection to kickdown switch 3 + 4 Backup lamp contact 5 + 6 Starter lockout contact | <ul style="list-style-type: none"> 6 Warning lamp (Fasten Seat Belts) 7 Cable connector or double plug connection behind center console 8 Fuses main fuse box 9 Door contact switch left 10 Warning buzzer 11 Warning switch 12 Ignition starter switch 13 Relay for starter/air conditioning 14 Relay for warning buzzer |
|---|--|



- | | |
|--|----------------------------|
| 1 Seat belt switch left | 8 Fuses main fuse box |
| 2 Seat contact switch (front passenger seat) | 9 Door contact switch left |
| 3 Seat belt switch right | 10 Warning buzzer |
| 4 Gear switch | 11 Warning switch |
| 6 Warning lamp (Fasten Seat Belts) | 12 Ignition starter switch |
| 7 3-point cable connector | |