

33–300 Adjustment of wheel bearing end play

Data

Wheel bearing end play	0.01–0.02 mm
------------------------	--------------

Lubricant

Quantity	In hub cap: Grease quantity approx. 15 g (about up to edge of bead)
----------	---

Type	Series fillup: Anti-friction bearing grease (refer to Specifications for service products page 265) Repair fillup: High-temperature anti-friction bearing grease (refer to Specifications for service products page 265.1) ¹⁾
------	---


¹⁾ Available in 150 gr. screw cans, part No. 000 989 49 51.

Tightening torque

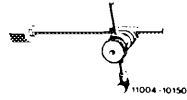
Nm

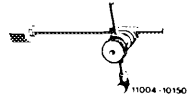
Hex. socket screw of clamping nut	14
-----------------------------------	----

Special tools

Pulling-off and pressing-on device for hub cap		116 589 22 33 00
--	--	------------------



Holder for dial gauge for adjusting wheel bearing end play		363 589 02 21 00
--	---	------------------



Conventional tools

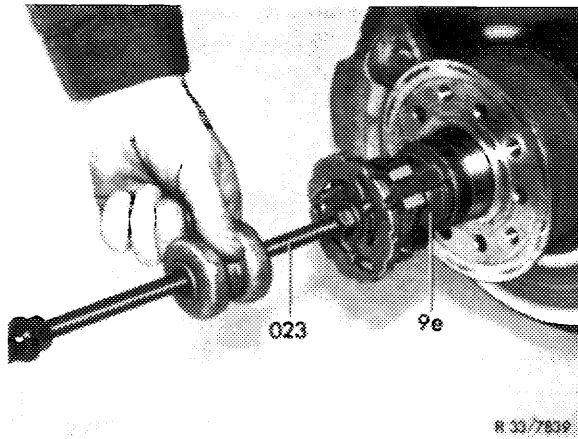
Dial gauge A 1 DIN 878	e.g. made by Mahr, D-7300 Esslingen Order No. 810
------------------------	--

Note

In the event of repairs, from now on use exclusively high-temperature anti-friction bearing grease for front wheel hubs. Generally renew complete grease charge of front wheel hub, since a mixture of anti-friction bearing grease or multi-grade grease must be absolutely prevented. If, in exceptional cases, high-temperature anti-friction bearing grease is not available, multi-grade grease (refer to Operating instructions page 267) may be used.

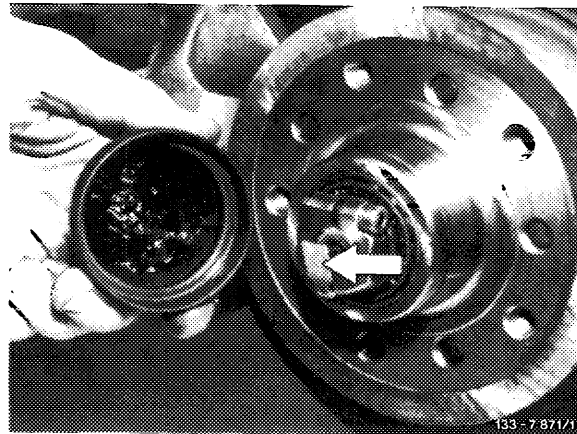
1 Jack-up vehicle, remove front wheel.

2 Pull off wheel cap with tool (023).

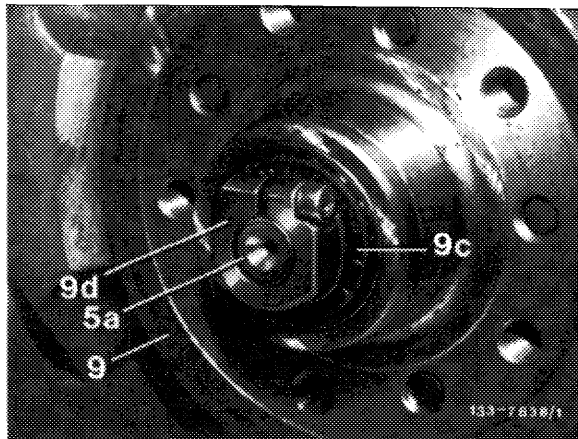


3 Remove contact spring for radio interference suppression.

4 Push brake pads away from brake disc (42–160).

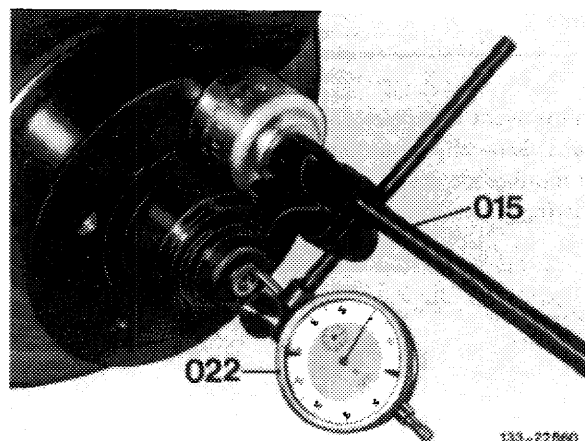


5 Loosen hex. socket screw of clamping nut, then tighten clamping nut (9d) **while simultaneously rotating hub (9)** to the extent that wheel can be turned with an effort only. Then screw clamping nut back again for approx. 1/3 turn and loosen tension by applying a blow against wheel spindle (5a) with a plastic hammer.



6 Place tester (015) on front wheel hub and adjust to approx. 2 mm preload with dial gauge (022).

Note: For measuring wheel bearing play, the formerly valid tester (015), part no. 116 589 12 21 00 can also be used.



7 Check end play of wheel hub by energetic pulling and pushing of flange

Rotate wheel hub several times prior to measuring.

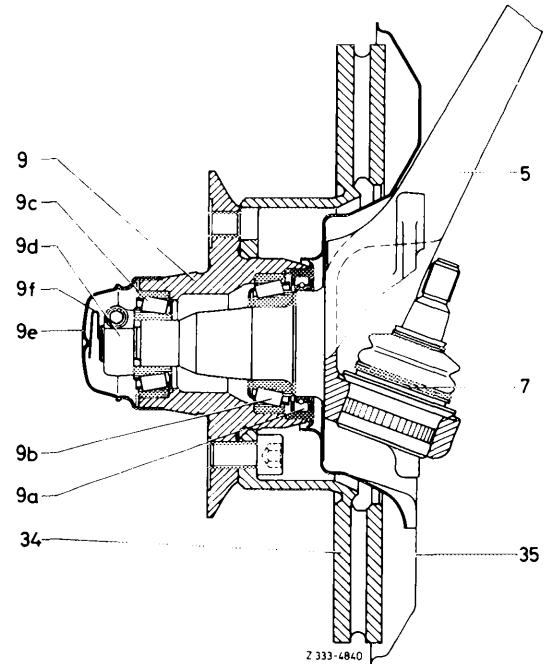
Attention!

Wheel hub should not rotate while measuring.

Each rotating movement of the wheel hub is indicated on dial gauge, so that accurate reading of a actual end play is then impossible.

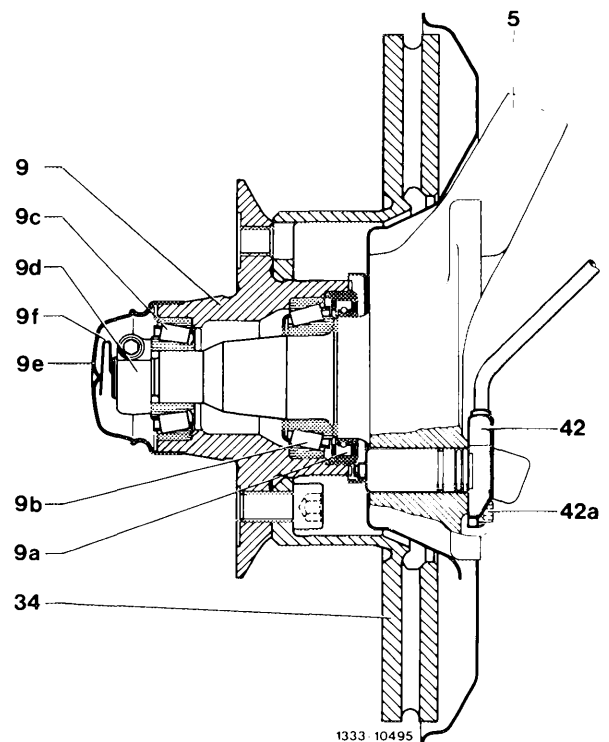
Front wheel hub without ABS

- 5 Steering knuckle
- 7 Supporting joint
- 9 Front wheel hub
- 9a Radial sealing ring
- 9b Tapered roller bearing, inside
- 9c Tapered roller bearing, outside
- 9d Clamping nut
- 9e Hub grease cap
- 9f Contact spring
- 34 Brake disc
- 35 Cover plate



Front wheel hub with ABS

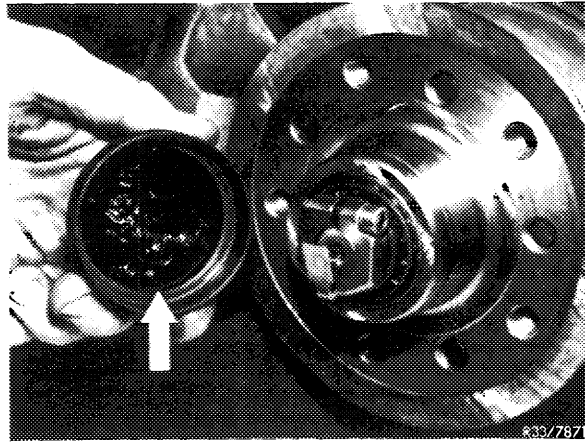
- 5 Steering knuckle
- 9 Front wheel hub
- 9a Radial sealing ring
- 9b Tapered roller bearing, inside
- 9c Tapered roller bearing, outside
- 9d Clamping nut
- 9e Hub grease cap
- 9f Contact spring
- 34 Brake disc
- 42 Rpm sensor
- 42a Hex. socket screw



8 Tighten hexagon socket screw of clamping nut and check end play once again.

9 Insert contact spring for radio interference suppression.

10 Fill wheel cap with anti-friction bearing grease approx. up to beaded edge.



11 Attach wheel cap with installer (023).

12 Mount front wheel, lower vehicle.

