



Revision: Note revised.

Engine 115 616 617
in model 123

Tightening torques

	Nm	(kpm)
Adjusting screw (2) on front engine stop	130	(13)
Adjusting screw (7) on rear engine mount	40	(4)

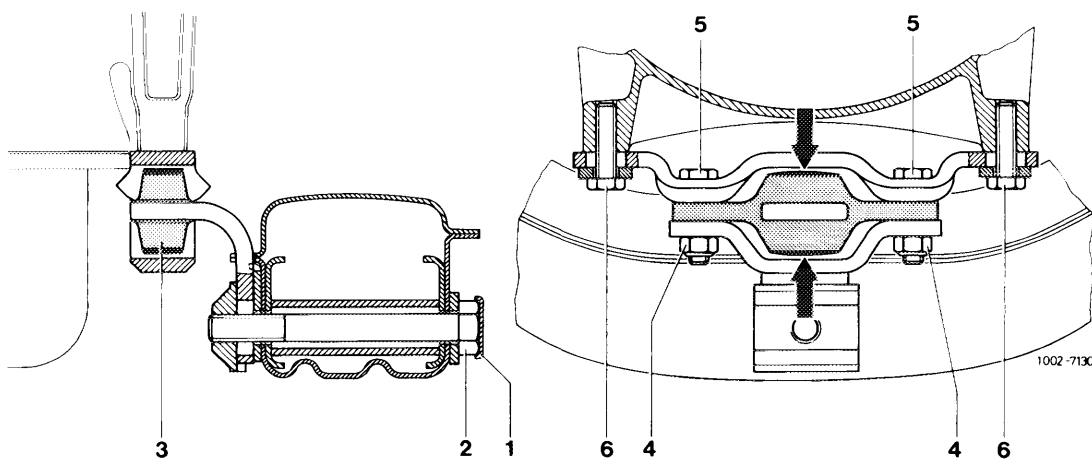
Special tools

Torque wrench handle 20–100 Nm (2–10 kpm)		001 589 35 21 00
Torque wrench handle 50–200 Nm (5–20 kpm)		001 589 44 21 00
Change-over ratchet for torque wrench handle		001 589 42 09 00

Note

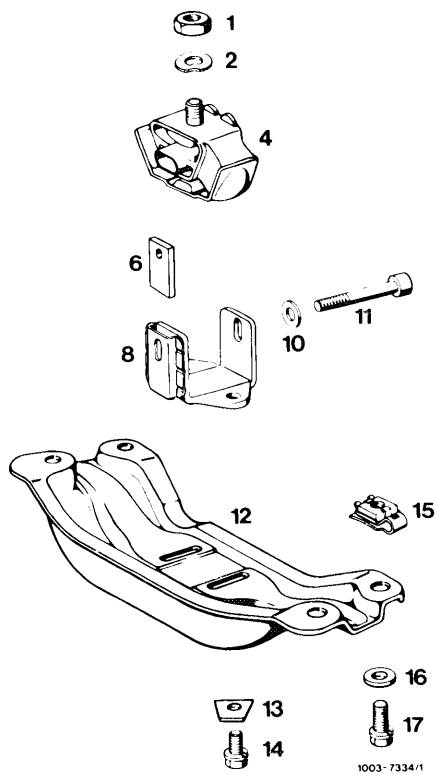
Vehicle should rest on its wheels ready-to-drive.

On engine 617 with two engine shock absorbers, releasing of the **front** engine stop is not required.



Front engine stop

- Turn steering completely to left-hand or right-hand lock.
- Swivel lock (1) on front engine stop laterally, lift and completely loosen adjusting screw (2).



Rear engine mount with engine stop

- Completely loosen adjusting screw (11) on rear engine mount.
- Move engine manually by slightly shaking crosswise.
- Tighten adjusting screw (11) at rear engine mount to specified torque.
- Tighten adjusting screw (2) at front engine stop to specified torque and secure with lock (1).

Slacken engine stop

Engine 110 in model 123

Tightening torque

	Nm	(kpm)
Adjusting screw (8)	40	(4)

Special tools

Torque wrench handle 20–100 Nm (2–10 kpm)



001 589 35 21 00

Change-over ratchet for torque wrench handle



001 589 42 09 00

Note

Vehicle should rest on its wheels ready-to-drive.

- Completely loosen adjusting screw (11).
- Move engine manually by slightly shaking crosswise.
- Tighten adjusting screw (11) to specified torque. Apply counterhold to nut (5).

