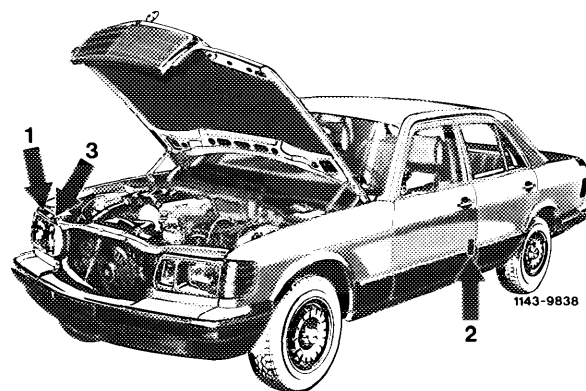
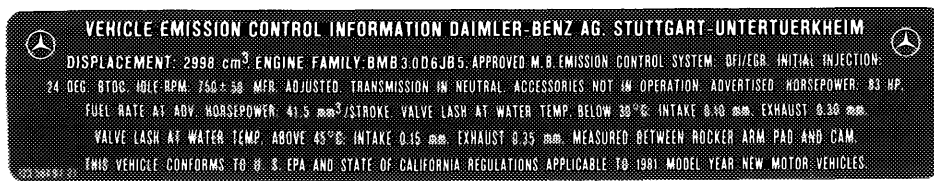


California vehicles are identified with three, and Federal version vehicles with two emission control labels.



Emission control identification label on radiator cross member (1)

This label contains the engine identification data as well as the most important engine adjustment data.

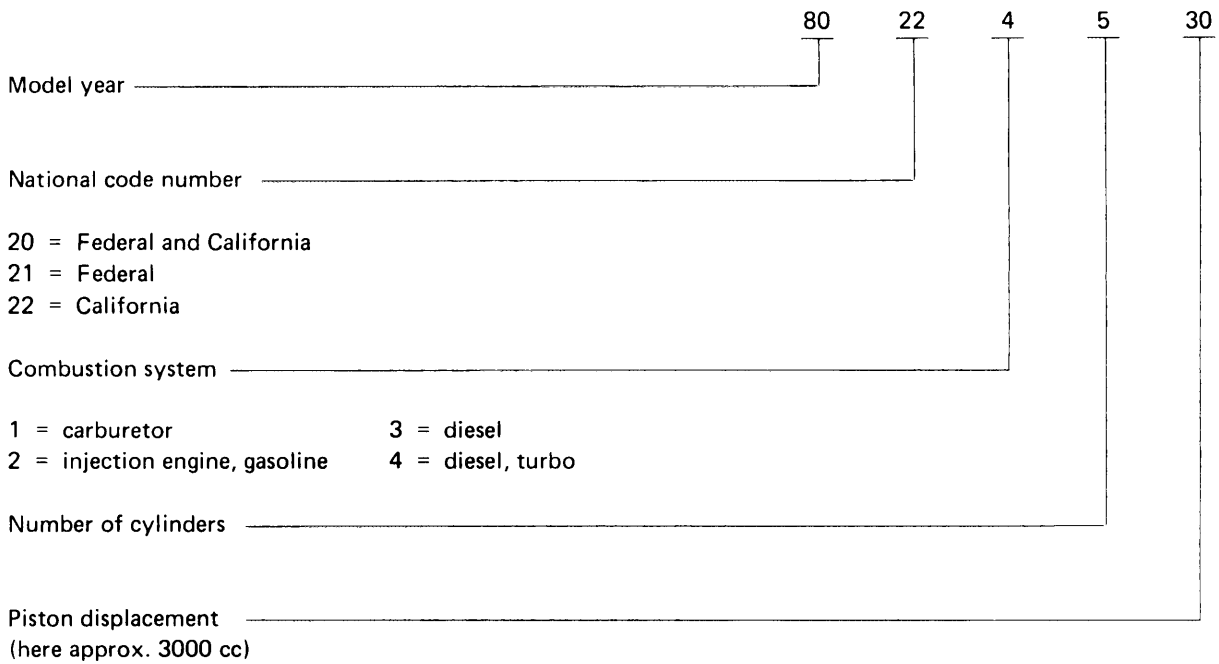


1074-9907

The key for engine identification data is an 8-digit code number for model year 1980 and a 10-digit code number for model year 1981.

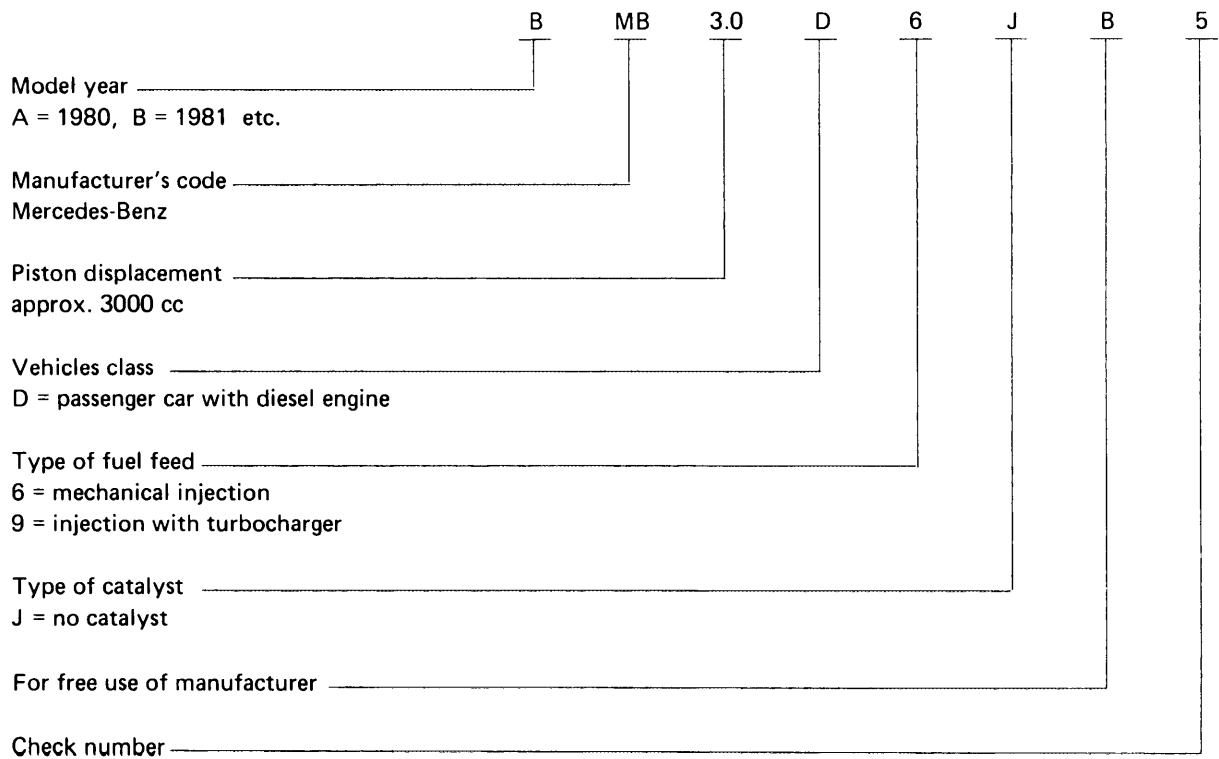
Example model year 1980:

Engine Family 80.22.45.30



Example model year 1981:

Engine Family B MB 3.0 D 9 J B 3



Basic color/lettering

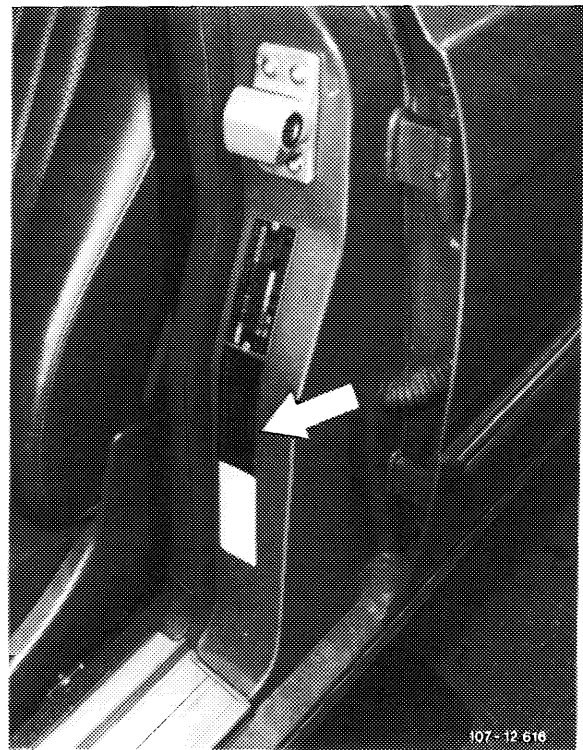
Model year	Federal version	California version
1980	black/white	yellow/black
1981 ¹⁾	black/white	

¹⁾ For model year 1981 there is only one version for Federal and California.

Identification label on door pillar of driver's door (2)

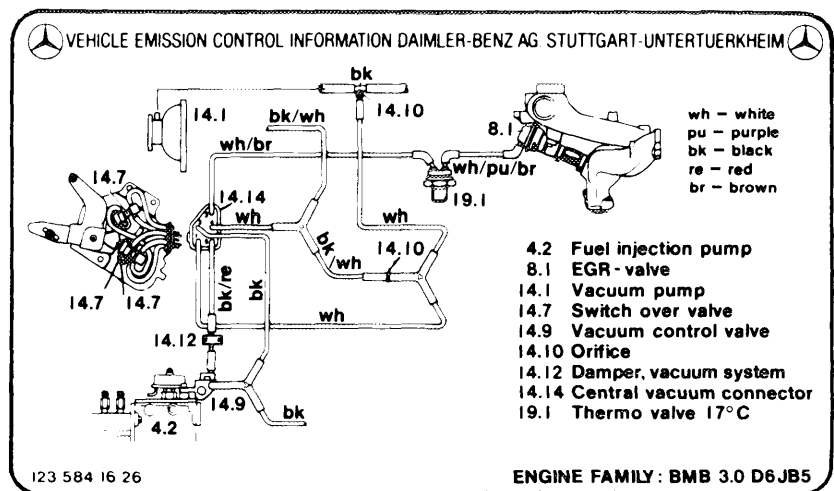
This label shows whether the vehicle is equipped with or without catalyts.

Vehicles with diesel engines are not provided with a catalyts (NON CATALYST).



Identification label (3, California only)

This label shows a diagram of the vacuum line routing in the engine compartment for all emission-related components.



1143 - 9841