

## 83-640 Removal and installation of in-car temperature sensor

---

### Data

---

Resistance at 20 °C (68 °F)  
ambient temperature

nominal 2100 Ohms  
max. 2310 Ohms  
min. 1910 Ohms

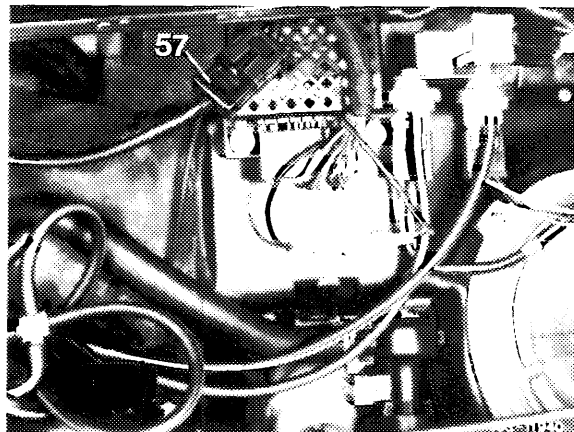
---

### Removal

---

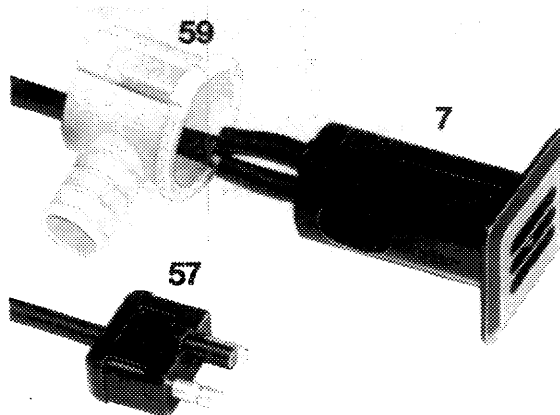
- 1 Remove shutter at center of instrument panel (83-150).
- 2 Remove glovebox (68-140).

- 3 Disconnect electrical 2-way coupling (57).



57 Electrical 2-way coupling  
for in-car temperature sensor

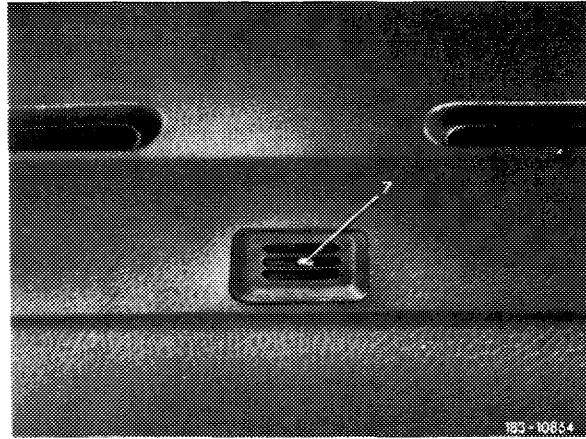
- 4 Pull off air hose.
- 5 Pull off in-car temperature sensor lower half (59) in downward direction, while slightly raising holding lugs.



7 In-car temperature sensor  
57 2-way plug  
59 In-car temperature sensor  
lower half

183 - 11986

6 Pull in-car temperature sensor (7) together with electric lead from instrument panel in upward direction.



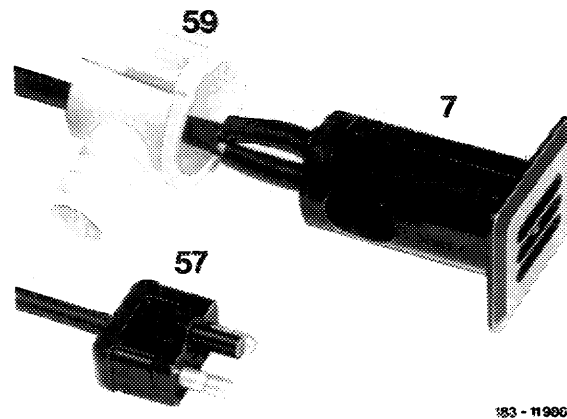
7 In-car temperature sensor

### Installation

---

7 Test in-car temperature sensor (7) with ohmmeter (83-609).

8 Install in-car temperature sensor (7) from above into instrument panel and attach together with lower half (59).



7 In-car temperature sensor  
57 2-way plug  
59 In-car temperature sensor  
lower half

9 Connect 2-way coupling (57) and slip air hose on in-car temperature sensor lower half (59).

10 Install glovebox.

11 Install shutter at center of instrument panel.