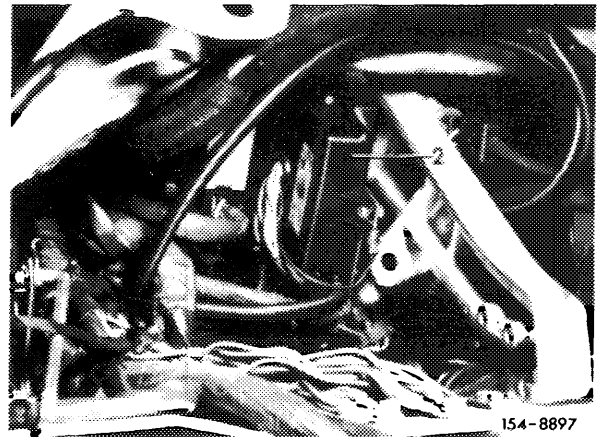


Removal

- 1 Remove lefthand cover from under instrument panel.
- 2 Disconnect control unit (2) at plug couplings from line harness.
- 3 Unscrew control unit with bracket from pedal bearing bracket.
- 4 Unscrew control unit (2) from bracket.



Installation

- 5 For installation proceed vice versa.
- 6 Perform function test on road.