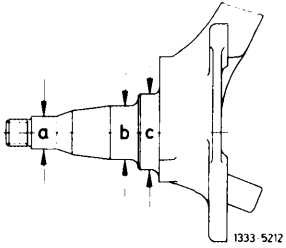


33-410 Checking of steering knuckle

Steering knuckle removed

Data

Perm. runout of wheel spindle on bearing seats		0.05		
Wheel spindle	Bearing seat "a"	21.44 21.43		
	Bearing seat "b"	34.93 34.92		
Dia. of running surface "C" for radial sealing ring		50.00 49.84		
Perm. distortion in	direction of camber	Measuring level A 1		0.7 ± 0.7
		Measuring level A 2		2 ± 2
	direction of caster	Measuring level B 1	0.7 ± 0.7	
		Measuring level B 2	2 ± 2	

Special Tools

Inspection device for steering knuckle

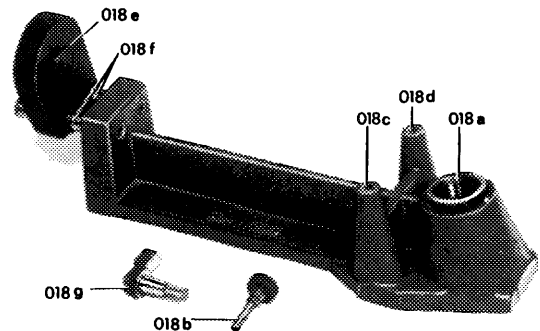
116 589 05 23 00

Inspection

1 Place wheel spindle of steering knuckle into mounting bore (018a) of inspection device.
If knuckle cannot be introduced into bore, wheel spindle is distorted.

Inspection device

018a	Mounting bore for wheel spindle	018d	Locking bore for right-hand steering knuckle
018b	Locking screw	018e	Measuring plate
018c	Locking bore for left-hand steering knuckle	018f	Guide pin
		018g	Measuring indicator

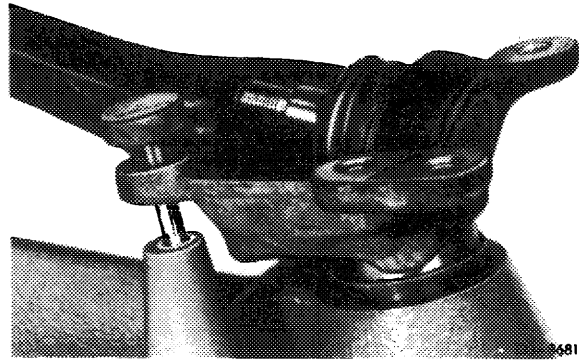


133-8680

2 Lock steering knuckle with locking screw in locking bore required for lefthand or righthand steering knuckle.

3 Insert measuring indicator into bore for ball pin of guide joint and remove measuring plate to rest against center of measuring indicator.

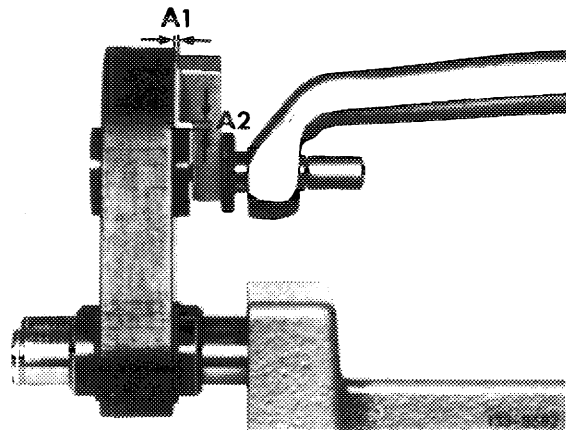
Note: For checking lefthand or righthand steering knuckle, mount measuring plate on both guide pins each time rotated by 180 °.



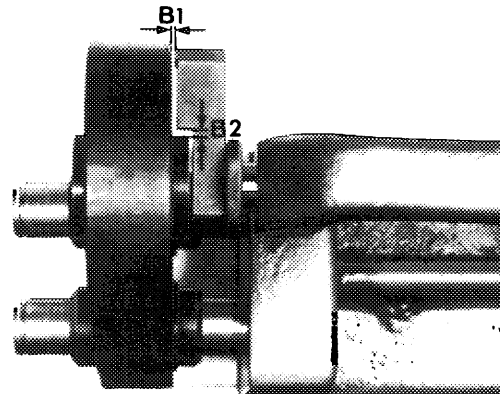
4 Turn measuring indicator by 360 °.

The permissible tolerance limit is exceeded when measuring indicator cannot be turned by 360 °.

Attention! When turning measuring indicator, measuring plate should rest against center of measuring indicator.

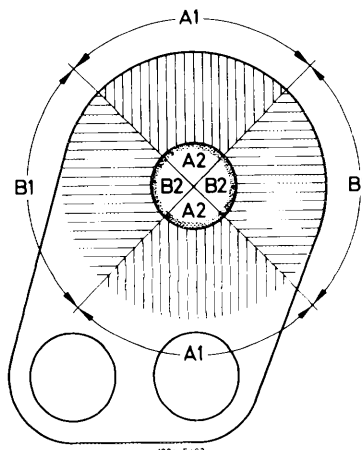


Permissible distortion of steering knuckle in direction of camber (A)



Permissible distortion of steering knuckle in direction of caster (B)

133-8683



Measuring levels A 1 and A 2 =
Permissible distortion in direction of camber
Measuring levels B 1 and B 2 =
Permissible distortion in direction of caster

1334-5403